



B. K. L. Walawalkar Rural Medical College

Affiliated to Maharashtra University of Health Science, Maharashtra

NAAC Accredited with CGPA at 'B++' Grade

Website : www.bklwrmc.com | E-mail : info@bklwrmc.com | Phone : 9209339465

NAAC
AQAR 2023-2024

Criterion VII
7.1.4

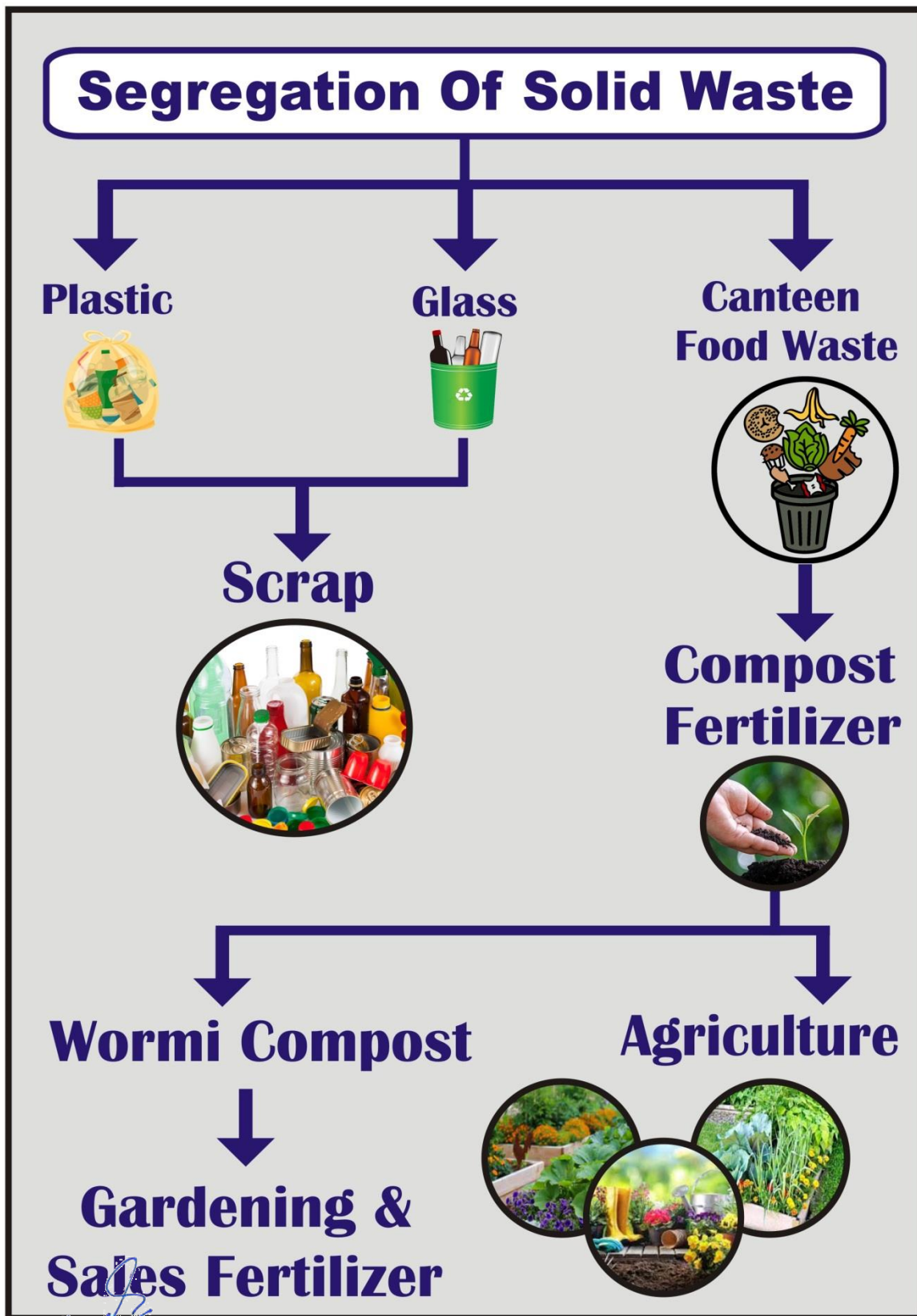
7.1.4 Describe the facilities in the Institution for the management of the following types of degradable and non-degradable waste

- | |
|--|
| • SOLID WASTE MANAGEMENT |
| • BIOMEDICAL WASTE COLLECTION |
| • STP PLANT |
| • WASTE RECYCLING SYSTEM |
| • HAZARDOUS CHEMICALS AND RADIOACTIVE WASTE MANAGEMENT |



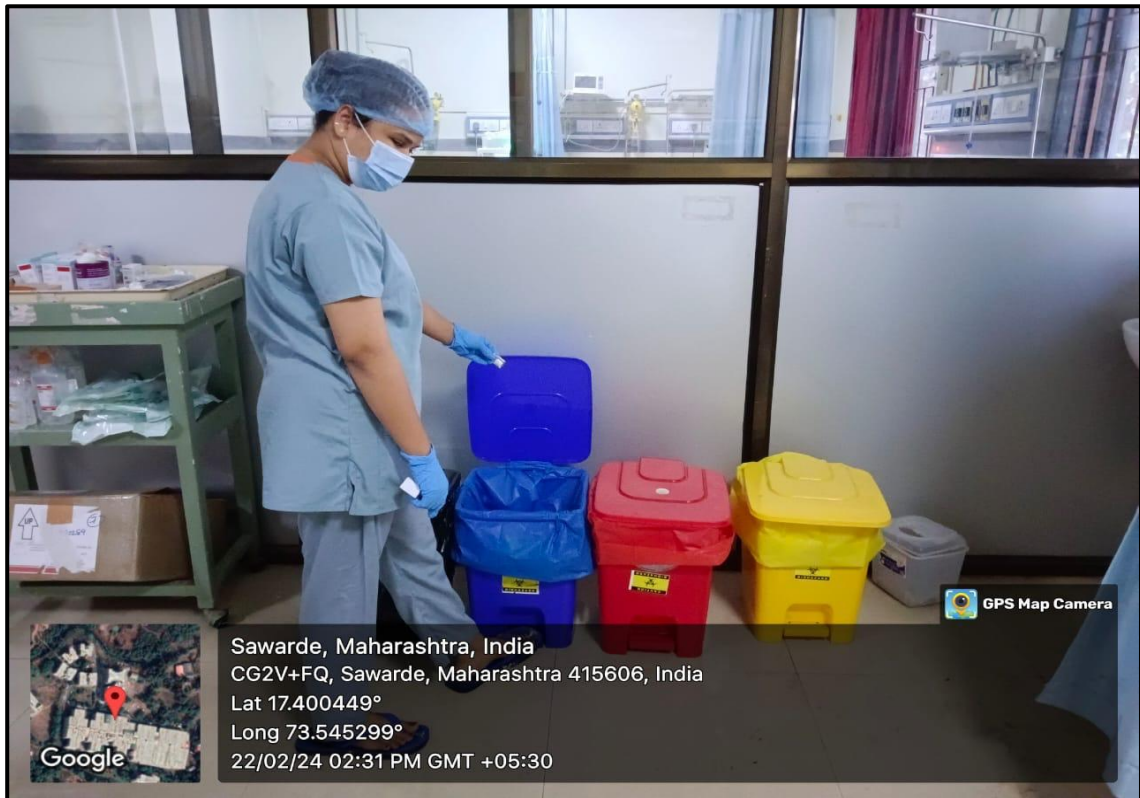
DEAN

SOLID WASTE MANAGEMENT



DEAN

BIOMEDICAL WASTE COLLECTION

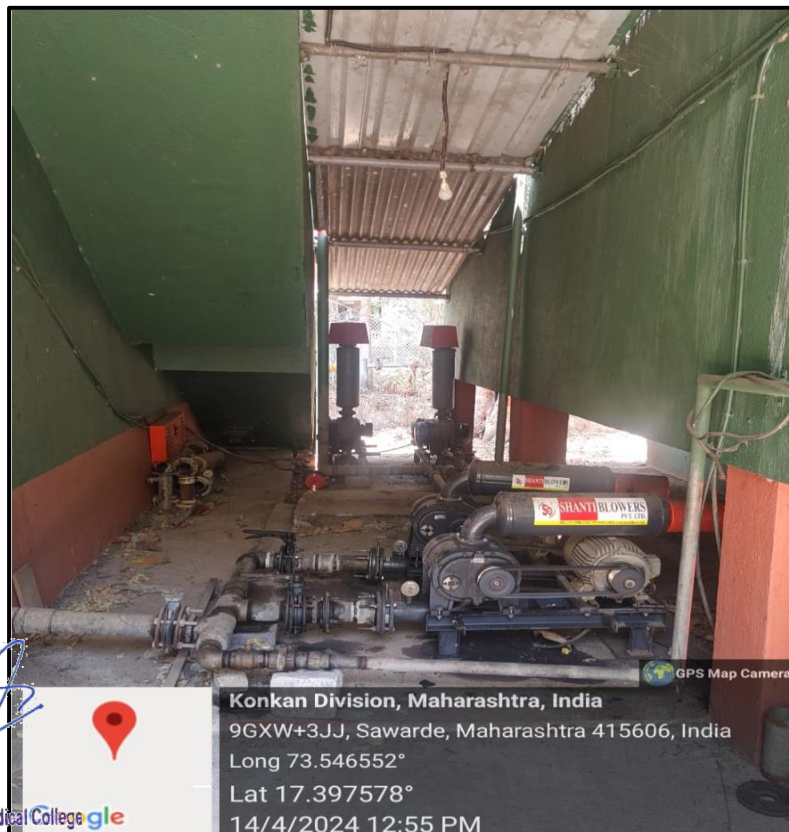
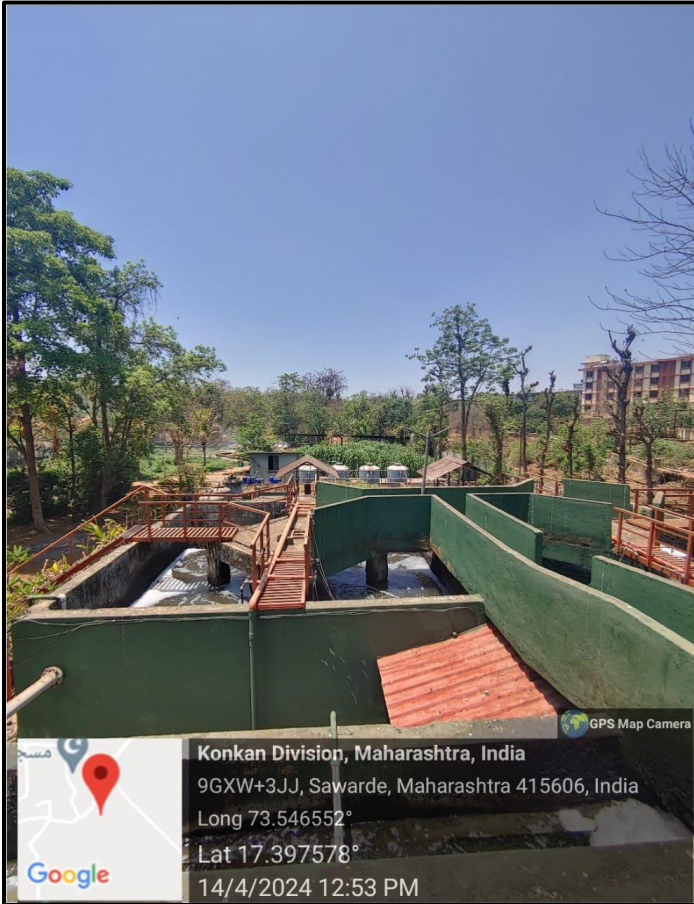



DEAN

B.K.L.Walawalkar Rural Medical College
At.Kasarwadi, Post.Sawarde
Tal.Chiplun,Dist.Ratnagiri

STP PLANT

Old STP plant



New STP Plant- behind the Girls Hostel



Arial View of STP Plant



DEAN

WASTE RECYCLING SYSTEM



HAZARDOUS CHEMICALS AND RADIOACTIVE WASTE MANAGEMENT

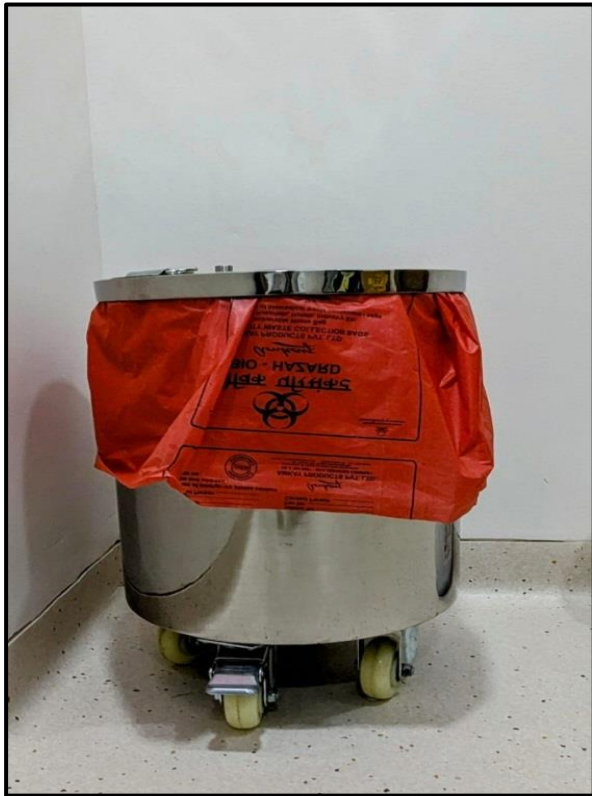
Centre for Nuclear Medicine (PET/SPECT/ Nuclide therapy)




DEAN



[Signature]
DEAN



Cobalt-60 Transport Container



HDR Iridium source container




DEAN

B.K.L.Walawalkar Rural Medical College
At.Kasarwadi, Post.Sawarde
Tal.Chiplun,Dist.Ratnagiri